

gracefaerie designs offers you

Annabella Supplement

for

#45 Seasons for MSD

Custom sizing by Guest Artist

Nancie of Nankatts

<http://nankatts.biz/>

*With this Supplement, you can make all of the dresses
in #45 for Kaye Wiggs' Annabella and Nyssa*



Five dresses and a petticoat are included in the #45 pattern:

- Falling Leaves (Autumn)*
- Lighting Candles (Winter)*
- Gathering Violets (Spring)*
- Gathering Violets (Spring Variation)*
- Catching Sunbeams (Summer)*
- Petticoat*



Guidelines for using the #45 Seasons for MSD pattern for Annabella/Nyssa:

- + Select the pattern pieces that are sized for Planetdoll girls unless otherwise indicated.
- + Follow the cutting and assembly directions as described in the #45 pattern with the following variations:

Autumn (Blue and Green fantasy dress and tights)

1. Select the Planetdoll Bodice pieces. Place the *center front* of the Bodice Front piece ½” away from the folded edge of the fabric (to add 1” at the center front of the bodice).
2. Adjust skirt length as desired.
3. For the Fantasy dress, Nancie omitted

the additional hemline ruffles, and added pre-gathered netting on top of the Skirt. Netting dimensions are 6” x 24”.

4. Add capris or slouchy socks to complete the outfits.

Winter (Red and white striped with self-ruffled edge)

1. Select the Planetdoll Bodice pieces. Place the *center front* of the Bodice Front piece ½” away from the folded edge of the fabric (to add 1” at the center front of the bodice).
2. Cut the Underskirt from net or tulle, 6 ½” x 40”.
3. Cut the Skirt 7” x 42”.

Spring Dress (Yellow plaid and Valentine dress)

1. Cut the Skirt 6 ½” x 21”
2. Select the Planetdoll Bodice and Dress Inset pieces.
 - a. Place the *center front* of the Bodice



Front piece $\frac{1}{4}$ " away from the folded edge of the fabric (to add $\frac{1}{2}$ " at the center front of the bodice).

b. Add $\frac{1}{4}$ " to the center back edge of the Bodice Back piece.

c. Place the *center front* of the Dress Inset piece $\frac{1}{4}$ " away from the folded edge of the fabric (to add $\frac{1}{2}$ " at the center front of the inset). Add $\frac{1}{4}$ " to the *center back* edge of the Dress Inset.

3. Cut the Neck Binding 1" x 9". Finished length will be 8 $\frac{1}{2}$ ".

4. Cut the Sleeve Binding 4". Finished length will be 3 $\frac{1}{2}$ ".



Spring Pinafore (Plaid outfit and Red Valentine outfit)

1. Pinafore Skirt: Cut two pieces, each 5 $\frac{1}{4}$ " x 14"

2. Select the Planetdoll Pinafore Yoke piece. Place the *center front* of the Pinafore Yoke piece $\frac{1}{4}$ " away from the folded edge of the fabric (to add $\frac{1}{2}$ " at the center front of the yoke). Add $\frac{1}{4}$ " to the *center back* edge of the Yoke.

Spring Variation (Lavender dress with overlay)

1. Follow directions for the Dress Inset as described for the Spring Dress.

2. Cut Lower Sleeves using the Planetdoll pattern, but shorten the length if you are adding lace edging.





Summer (White print with red and blue flowers)

1. Select the Planetdoll Yoke piece. Place the *center front* of the Pinafore Yoke piece $\frac{1}{2}$ " away from the folded edge of the fabric (to add 1" at the center front of the yoke).
2. Upper flounce: Use **Goodreau** size pattern piece.
3. Middle flounce: Cut one piece $2\frac{1}{4}$ " x 22".
4. Lower flounce: Cut one piece $2\frac{1}{2}$ " x 24". Gather to 22".

Petticoat

1. Select the Annabella size Petticoat Yoke Front and Petticoat Yoke Back pieces that are included with this Supplement.
2. Cut the Skirt $5\frac{1}{2}$ " x 26" or adjust length as desired.

Idea in Flight!

Try shortening the length of the skirts, and layering the dresses over Pantaloons. Nancie used the #42 *Planet Luxe* Fancy Bloomers pattern and adapted it for Annabella. Cut the Waistband $7\frac{1}{2}$ " and turn under $\frac{1}{2}$ " at each end. Make a casing at the lower edge of the pant legs and insert elastic through the casing. Draw up the elastic to 4". Follow the #42 instructions to complete the Pantaloons.



“Hope you all enjoy creating your own interpretations of the patterns.”
Nancie

Models’ Measurements: Annabella by Kaye Wiggs

Special thanks to Mae at BJDcollectasy.com for these comprehensive measurements and for the photos of Annabella wearing Nancie’s adorable prototypes.

Height: 45cm
Bust: 19cm
Waist: 15.5cm
Hips: 20.5cm
Across shoulder without arms: 7.5cm
Across shoulder including arms: 10cm
Shoulder to wrist: 13.5cm
Side waist to ankle: 25cm
Waist to floor: 27.5cm
Inside leg to ankle: 18.5cm
Inside leg to floor: 20.5cm
Length of foot: 5.7cm
Width of foot: 2.7cm

Thank you again, Nancie, for custom sizing the #45 for Annabella. I love your work!

grace

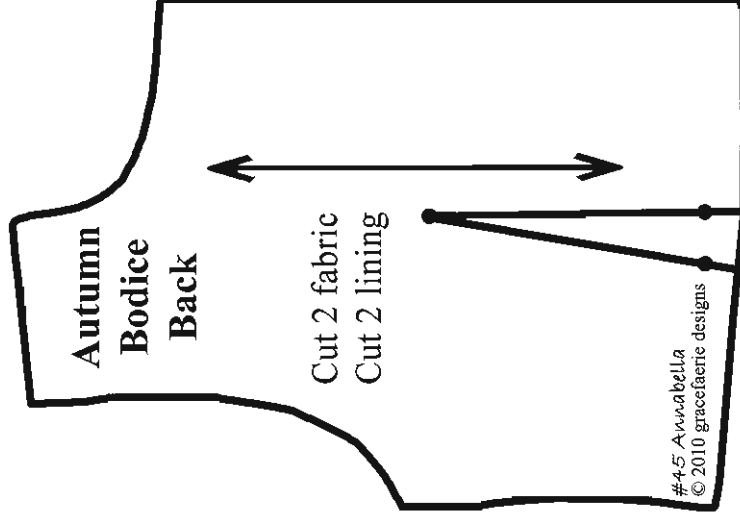
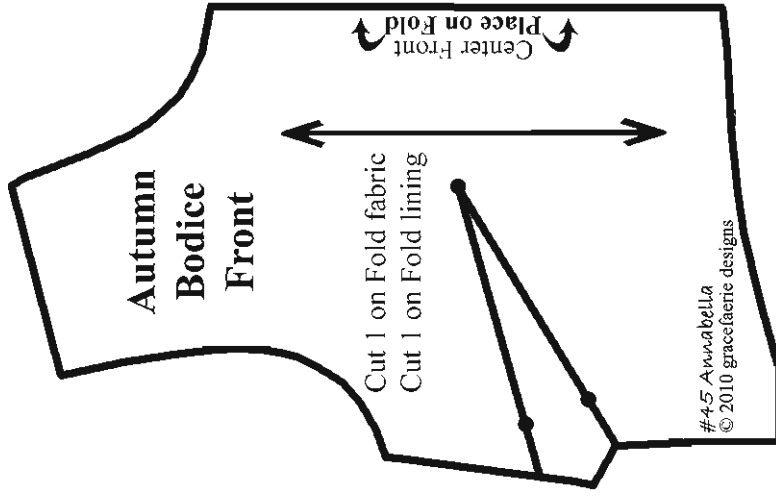


gracefaerie designs



Patterns for ball jointed dolls

<http://www.gracefaerie.com>



This bodice pattern was drafted by gracefaerie and added to the Supplement in November 2010.

