

gracefaerie designs



no Designs or  
to grace their curves and mysteries

no Patterns or  
to set your imagination in flight

Patterns for ball jointed dolls

## Panties Pattern

Custom sized for 43cm Planetdoll, Dollstown 7, Dollstown Elf, and Dollstown 13 girls

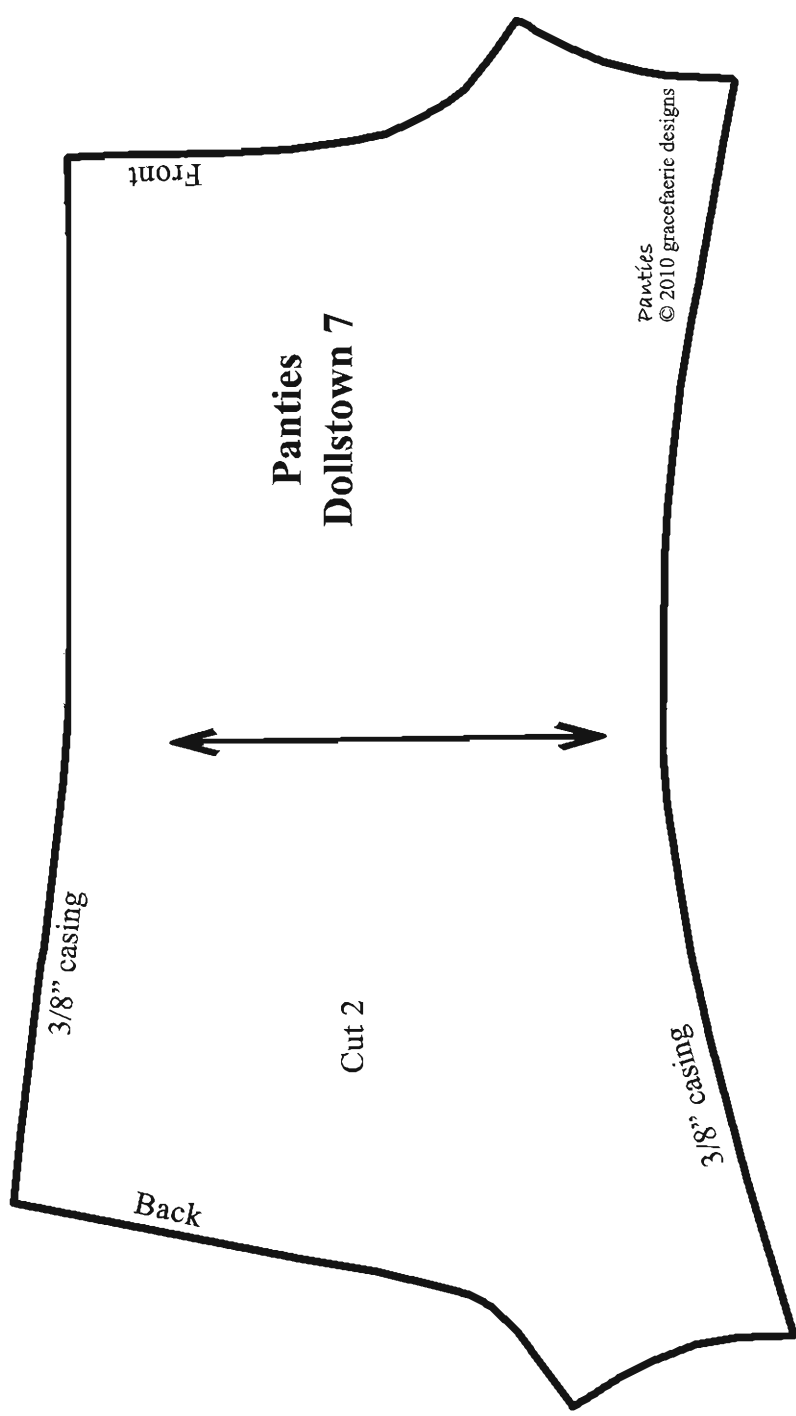
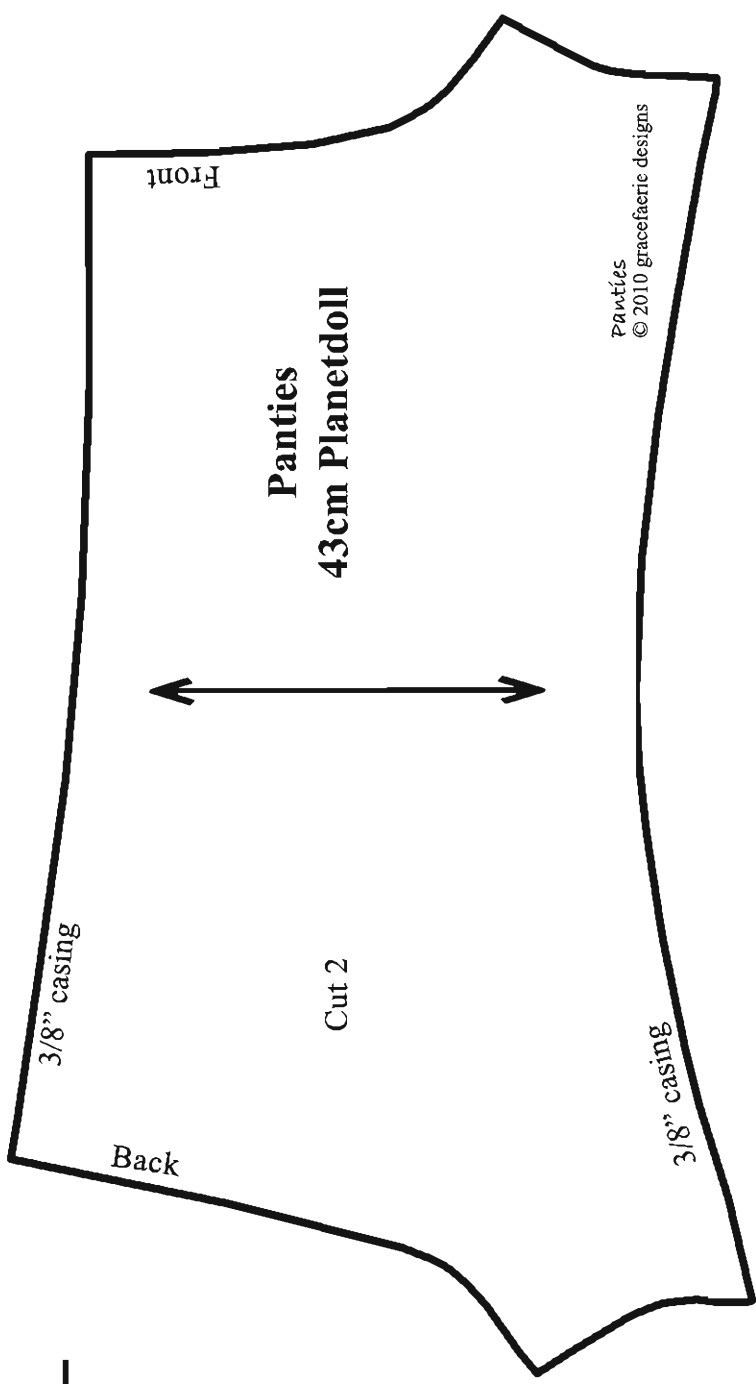
*You will need a small piece of woven cotton fabric and one half yard of 1/8" elastic to make these panties. All seam allowances are 1/4".*

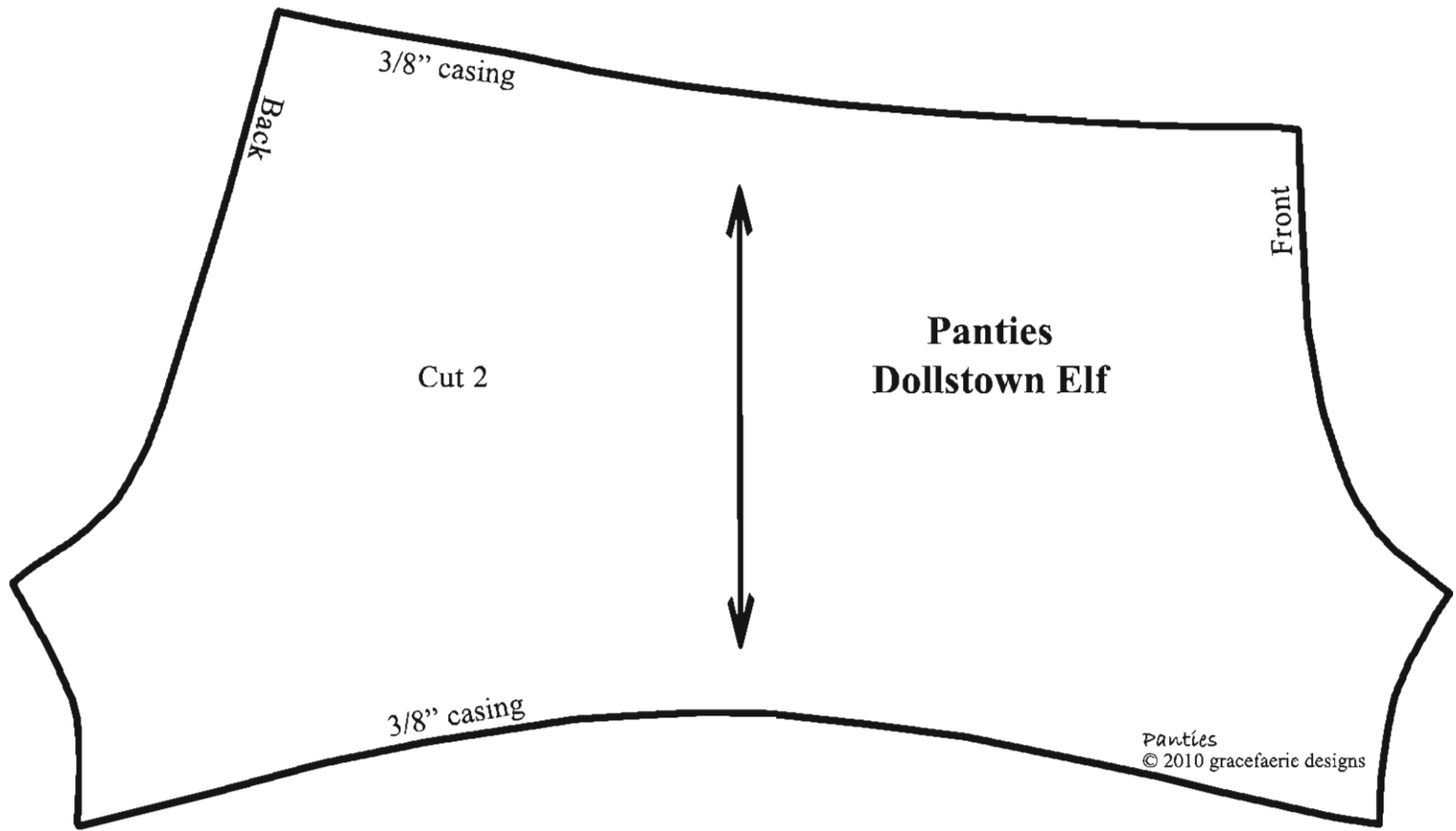
1. Select the correct size pattern and cut out the panties.
2. With right sides together, stitch center front seam. Clip curves and press seam open.
3. Finish the upper edge and leg openings with an overlock stitch.
4. To form 3/8" casing at the upper edge, fold under 3/8" and press. Make one row of stitches very close to the fold line and another row of stitches 1/4" from the first row of stitches.
5. Thread a piece of 1/8" elastic through the casing and stitch at one end of the casing to secure. Draw up the elastic. The finished length will be: Planetdoll: 5 3/4". DT7: 6". DT Elf: 6 3/4". DT13: 7 1/2"  
Stitch at the other end of the casing to secure.
6. To form casing or hem at the lower edge of the leg openings: Turn under 3/8" and press. Make one row of stitches very close to the fold line and another row of stitches 1/4" from the first row of stitches.
7. Thread a piece of 1/8" elastic through the casing and stitch at one end of the casing to secure. Draw up the elastic. The finished length will be: Planetdoll: 3 1/2". DT7: 3 3/4". DT Elf: 4 1/4". DT13: 5"  
Stitch at the other end of the casing to secure. Repeat for the other leg opening.
8. With right sides together, stitch the center back seam. Clip curves and press seam open. Make a few stitches at the upper edge to secure the casing in the open position.
9. With right sides together, stitch the inseam, beginning at the hem edge of one leg opening and ending at the hem edge of the other leg opening. Press seam open. Turn to the right side and slip on your doll.

[www.gracefaerie.com](http://www.gracefaerie.com)



1"





3/8" casing

Back

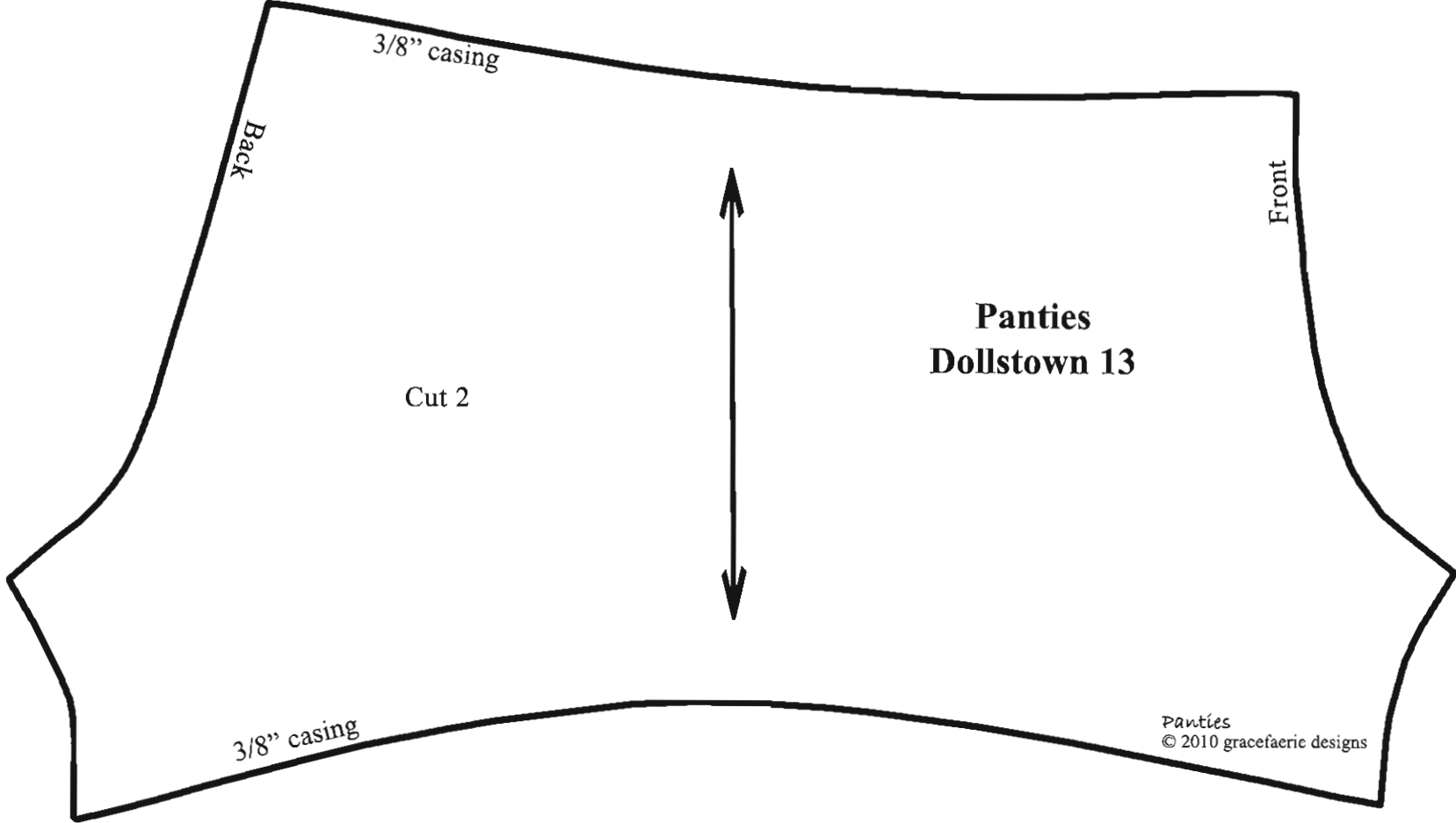
Front

Cut 2

**Panties  
Dollstown Elf**

3/8" casing

Panties  
© 2010 gracefaerie designs



3/8" casing

Back

Front

**Panties  
Dollstown 13**

Cut 2

3/8" casing

Panties  
© 2010 gracefaerie designs